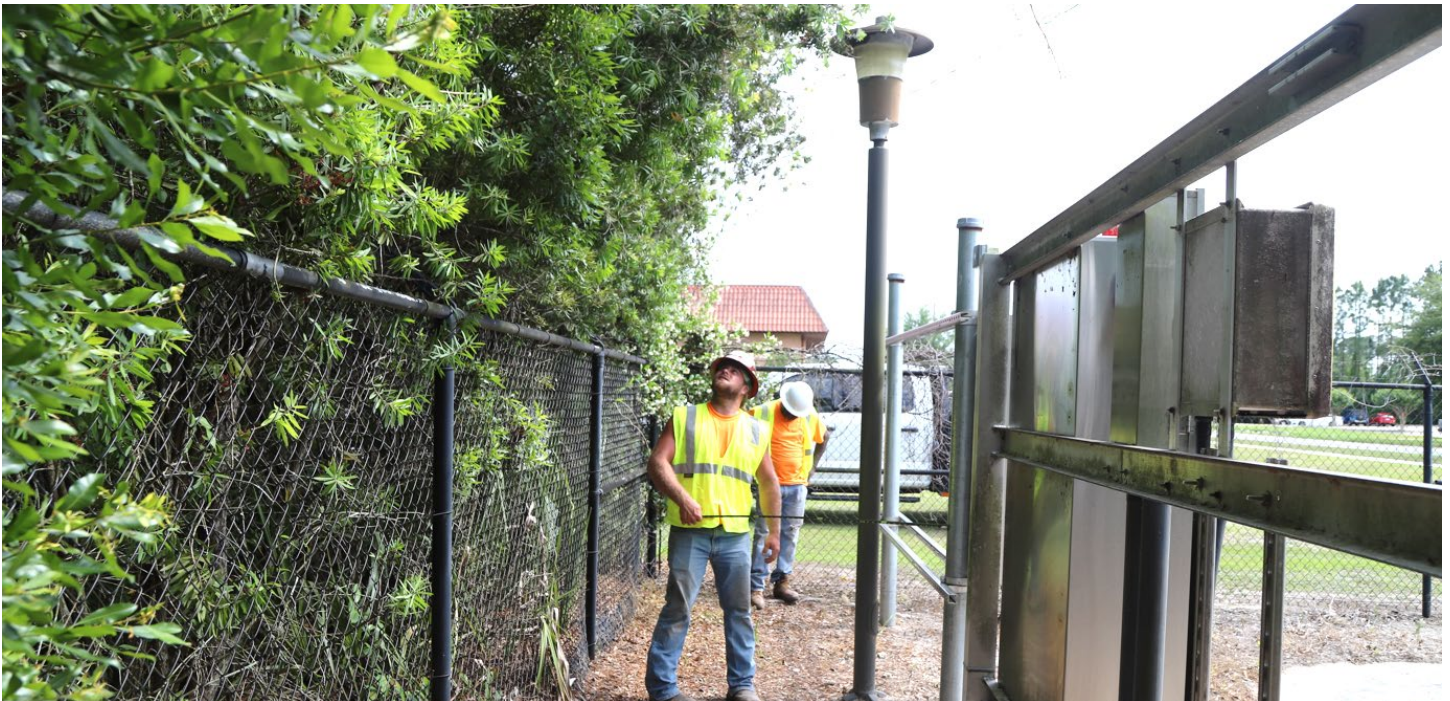


Facility Construction Project Photos – May 2024

#2110 PUMP STATION 3101 REHAB (0% - SEPTEMBER 2024)



1. Thomas Lewis (PopCo Equipment Operator) performs preliminary measurements for the new electrical shed.
2. Thomas Lewis checks the clearance between the fencing and the new electrical shed. The existing trees will need to be trimmed, and site lighting will need to be removed and replaced.